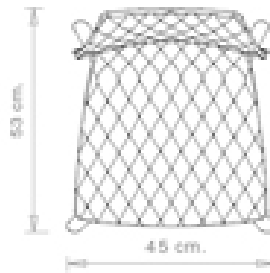


## Uni 577

### UNI COLLECTION:

Uni 550, Uni 550M, Uni 378, Uni 378B, Uni 378M, Uni 378B-M, Uni 380M, Uni 380, Uni 380B, Uni 380B-M, Uni386, Uni 562, Uni 562M, Uni 386M, Uni 602, Uni 602M, Uni 603M, Uni603, Uni 551, Uni 551M, Uni 552, Uni552M, Uni552-G, Uni 552M-G, Uni 552T, Uni 552G-T, Uni 558-DP, Uni 558M-DP, Uni 558-DR, Uni 558M-DR, Uni 553M, Uni 553, Uni 577, Uni 577M, Uni 544, Uni 565, Uni 391, Uni 393, Uni 391M, Uni 393M, Uni 220, Uni 221, Uni 222, Uni 223, Trolley 536,



Chair with beech wood frame, 4 rounded legs. Polypropylene shell.

#### WEIGHT

4,7 kg

#### PACK

0,30 m<sup>3</sup>

#### PIECES PER BOX

2

## FINISHES SEATING

### PP POLYPROPYLENE



RAL 9016 Traffic white  
≡



NCS S2060-B Azure  
≡



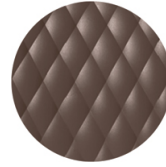
RAL 3000 Flame red  
≡



RAL 7016 Anthracite  
grey  
≡



RAL 2003 Pastel  
orange  
≡



NCS S7005-Y50R  
Cocoa  
≡



RAL 9005 Jet black  
≡



RAL 4008 Signal violet  
≡



PANTONE 380 C  
Boss green  
≡



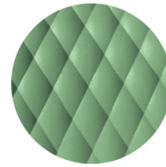
NCS S4005-Y50R  
Turtle-dove  
≡



RAL 1004 Golden  
yellow  
≡



PANTONE 18-1438  
Marsala  
≡



RAL 6021 Pale green  
≡

---

**FRAMES**

---

**LE WOOD**

Maple stained beech wood



Natural beech wood



Wengé stained beech wood



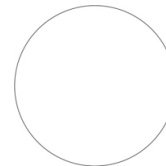
Black stained beech wood



'Canaletto' walnut stained beech wood



Oak stained beech wood



Stained according to sample

---

**CERTIFICATIONS**

---

- > UNI/EN 16139:2013 - Par.4.1. Generale. 4.2 Cesoiamento (27/10/15)
- > UNI/EN 16139:2013 - Par.4.3. Stabilità (27/10/15)
- > UNI/EN 16139:2013 - Par.7. Informazioni per l'uso (27/10/15)
- > UNI/EN 16139:2013 - Prova 1. Carico statico sedile e schienale: 2-Uso estremo (27/10/15)
- > UNI/EN 16139:2013 - Prova 12. Carico statico gambe anteriori: 2-Uso estremo (27/10/15)
- > UNI/EN 16139:2013 - Prova 13. Carico statico gambe laterali: 2-Uso estremo (27/10/15)
- > UNI/EN 16139:2013 - Prova 14. Prova di urto sul sedile: 2-Uso estremo (27/10/15)
- > UNI/EN 16139:2013 - Prova 15. Prova di urto sullo schienale: 2-Uso estremo (27/10/15)
- > UNI/EN 16139:2013 - Prova 2. Carico statico sul fronte anteriore: 2-Uso estremo (27/10/15)
- > UNI/EN 16139:2013 - Prova 3. Carico verticale sullo schienale: 2-Uso estremo (27/10/15)
- > UNI/EN 16139:2013 - Prova 8. Prova di fatica sedile e schienale: 2-Uso estremo (27/10/15)
- > UNI/EN 16139:2013 - Prova 9. Prova di fatica sul bordo anteriore: 2-Uso estremo (27/10/15)

---

**USES**

---

coffee & restaurants, hotels, retail,